

## STANDARD BOOSTER FEATURES

- Full Color Touchscreen
- OMNI Pump Logic Controller
- VFD's with Manual Overload Protection
- Serviceable In Place Epoxy Coated Check Valves
- Thermal Protection Valves For Each Pump
- 304 SS Headers: Grooved Ends With Caps
- Suction & Discharge Digital LED Pressure Gauges
- Premium Efficiency Motors
- Factory Flow Tested
- ASHRAE 90.1 Compliant
- NSF/ANSI 61 & 372 Certified

## OMNI BOOSTER CONTROLLER

Standard controller features include:

- Full Color Touchscreen
- Single Point Power Connection
- Low Suction Pressure Alarm & Cutout
- High Suction Pressure Alarm & Cutout
- Low System Pressure Alarm
- High System Pressure Alarm & Cutout
- High Temperature Alarm & Cutout
- No Flow Shutdown
- Tank Over-Charge
- Automatic Alternation
- Overload Failure Alarm

## COMMUNICATION OPTIONS

Communication Options include:

- BACnet IP
- BACnet MSTP
- Modbus TCP
- Modbus RTU
- LON

\*Not all options are available on all models

## CONTROL OPTIONS

Control Options include:

- DemandSet Control
- Dry Run Sensor
- Audio Alarm
- Lightning Arrestor
- Additional Adjustable High Pressure Shutdown

\*Not all options are available on all models

## VARIABLE SPEED DRIVE

Variable Speed Drive Manufacturer Options include:

- Schneider Electric (standard)
- Allen Bradley
- Danfoss
- ABB
- Others available upon request

## BOOSTER ACCESSORIES

Booster Optional Accessories include:

- Stainless Steel Frame
- Outdoor Enclosure
- Flanged Adaptors
- Copper Transition Fittings
- Flexible Transition Fittings
- Easy Connect Tank Fitting



## MODULAR VARIABLE SPEED PRESSURE BOOSTERS

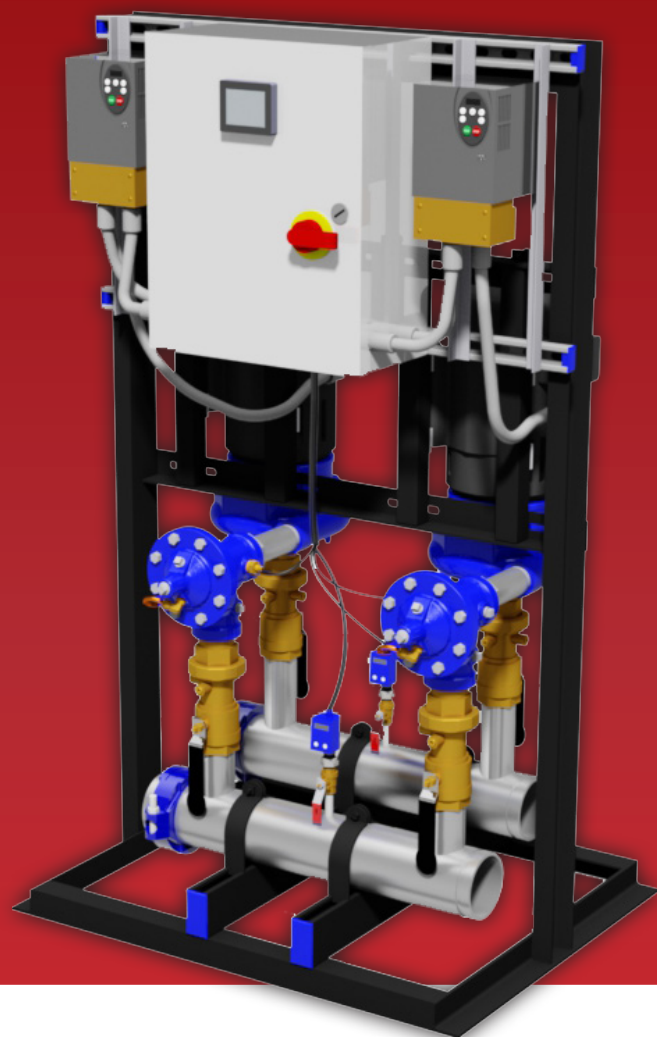


1-888-902-8324  
hyfabco.com



# MVP

MODULAR VARIABLE SPEED PRESSURE BOOSTER

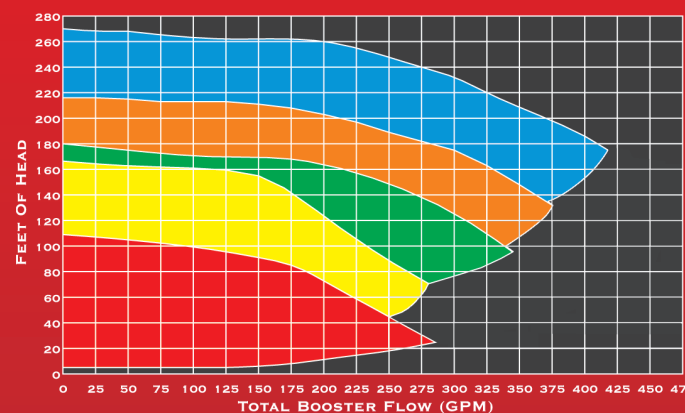


Our Modular Variable Speed Pressure Booster (MVP) Series is the industry standard for quality, dependability, energy efficiency and ease of installation.

- Duplex units thru 15 HP
- Duplex, Triplex or Quadraplex pump arrangement
- Full-color touchscreen on every booster
- Easily configurable field connections
- Small footprint/Fits through standard door
- Factory flow tested
- End suction pump design

## MVP UNITS

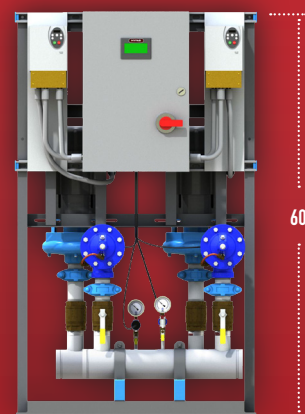
### Model Identification



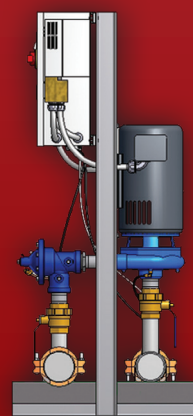
### MVP-850-XXX

Booster Series	Pump Size Horsepower	Voltage (208) (460)
MVP-630-XXX (Duplex 3HP Booster, 515 lbs.)		
MVP-850-XXX (Duplex 5HP Booster, 537 lbs.)		
MVP-875-XXX (Duplex 7.5HP Booster, 557 lbs.)		
MVP-8100-XXX (Duplex 10HP Booster, 605 lbs.)		
MVP-8150-XXX (Duplex 15HP Booster, 650 lbs.)		

### Booster Dimensions

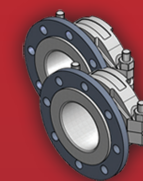


4" Stainless Steel Grooved Headers  
Same Footprint For All Models  
Easily Configurable Field Connections  
NSF Certified

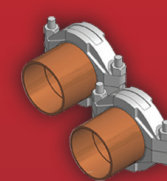


Fits Through Standard Door Opening  
Single Point Power Connection  
Every MVP Booster Is Factory Flow Tested  
ASHRAE 90.1-2010 Compliant

### Optional Accessories



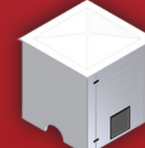
Flange Adapters  
(MVP-FK-4)



Copper Transition Fittings  
(MVP-TF-4)



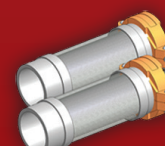
Hydro-Pneumatic Tank  
Easy Connect End Cap  
(MVP-TC-4)



Outdoor Enclosure  
(MVP-ENC)



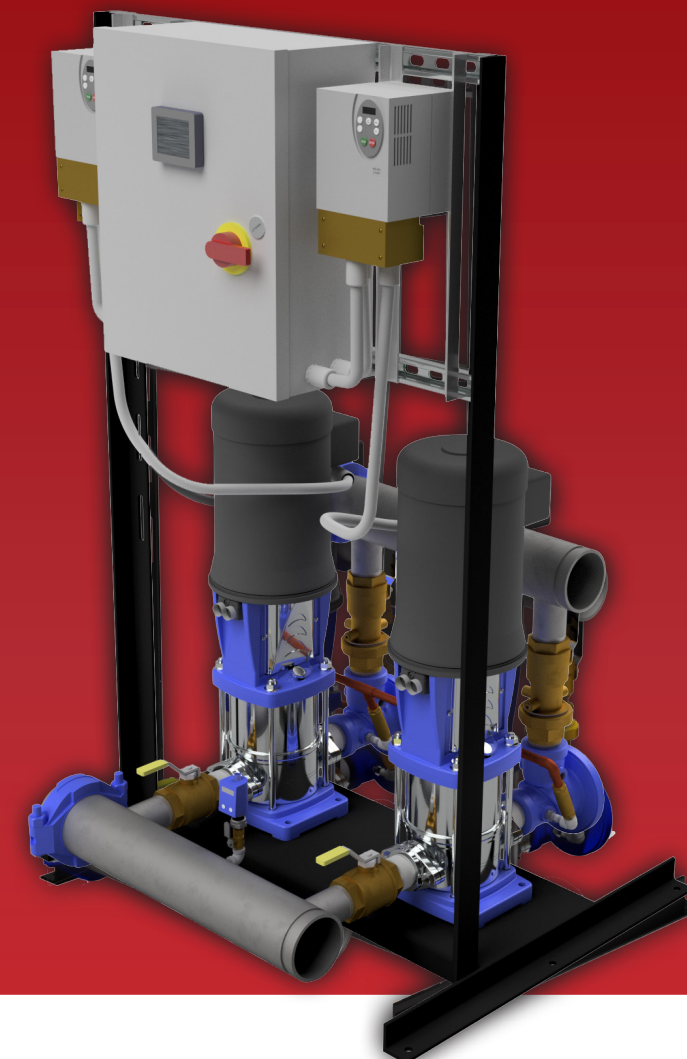
Hydro-Pneumatic Tank  
(FX-60V, 3-7.5HP\*)  
(FX-200V, 10-15HP\*)  
\*Recommended Minimum Tank Size  
\*Tank Required For Proper Operation



Flexible Transition Fittings  
(MVP-FTC-3C)  
(MVP-FTC-4C)  
(MVP-FTC-4F)

# eMVP

MODULAR VARIABLE SPEED PRESSURE BOOSTER



As with all HYFAB boosters, the eMVP is factory tested and approved before it ships.

- Duplex, Triplex or Quadraplex pump arrangement
- Full-color touchscreen on every booster
- Available with multiple Variable Speed Drive manufacturers
- Flows of up to 650 GPM per pump available
- Factory flow tested
- Easily configurable field connections
- Stainless steel multistage pump design
- Ideal for high pressure/low flow applications
- Low suction header for open tank applications